



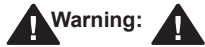
Read this manual carefully before installing, operating, servicing or repairing.

Working environment:

- Using these tools in any potentially explosive environment is strictly prohibited.
- It is always recommended that these types of tools must be operated when standing on a solid or firm location.
- Always use these tools in a well ventilated area.
- Slipping, stumbling and falling are the major causes of potential serious injury, therefore, a clean and clutter free surface in the working area before operating the tools is strongly recommended.

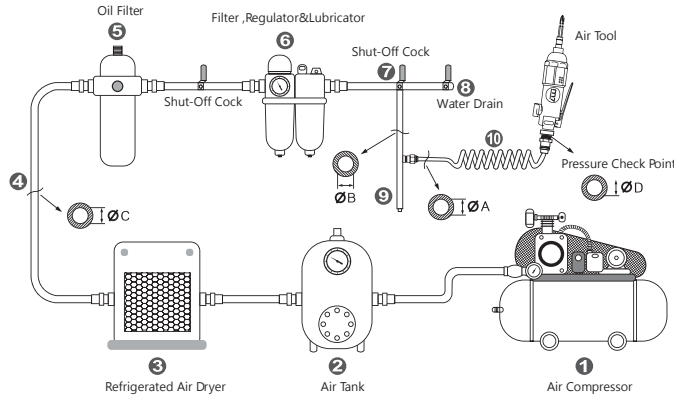
Air supply and connection requirements:

- The maximum recommended air pressure during operation must not exceed 90 psi (6.3bar). Higher air pressure may create unsafe operating conditions for the tool and the user.
- The compressed air should be cooled and have a water filter installed at the outlet end of the compressor. Even with a water filter installed, some water may still condense in the piping or hose and will enter the tool mechanism causing premature damage to the tool. Therefore, it is recommended to install an air filter-lubricator device somewhere between the tool and the compressor.
- Always use an air compressor of the proper capacity to operate each tool.
- Clean the hose with a blast of compressed air before connecting the hose to the air tool. This will prevent both moisture and dust inside the hose from entering the tool and causing possible rust or malfunction.



- This tool should only be used as a hand operated tool. It is powered by compressed air and is not insulated against electric shock.
- This tool is specially designed for grinding sharp edges, burrs, or a surface which needs to be cleaned or smoothed. Any application or use of this tool other than what it is designed for is strictly prohibited.
- Make sure that the wheel dimensions are compatible with the grinder and the wheel fits the spindle.
- High sound levels may cause hearing damage. Always wear hearing protection when operating this tool.
- Wearing eye/face protection can reduce the danger of high-speed materials being emitted from the tool.
- User must wear proper clothing. Loose clothing, long hair, stings, straps, belts and jewelry should not be worn when operating this tool.
- Always wear gloves to reduce the risk of cuts or burns.
- Working with certain materials may create emission of dust and fumes, which may cause a potential explosive environment and a hazard to the health. Therefore, wearing correct breathing protection and taking some preventive measures are recommended.
- Make sure that the allowed operating speed of the grinding wheel to be used on this tool is higher than 15000R.P.M.
- Inspect the grinding wheel carefully before use. Using a chipped, cracked or otherwise defective wheel will create an unsafe operating environment.
- Make sure that the grinding wheel is correctly mounted and tightened before use. Run the tool at no-load for 30 seconds in a safe location to check the function. Stop immediately if there is considerable vibration or any other defects.
- Also make certain that the wheel guard is in place, in good condition, is mounted correctly and is inspected regularly.
- Ensure that the work piece is properly supported or fixed before operating.
- Ensure there are no bystanders in the vicinity of working area.
- Test run the tool to make sure of the rotation direction before practical use. This can reduce the potential hazard due to unexpected rotating direction.
- Make sure that the direction of the sparks generated from the grinding wheel is properly directed so as to not create a hazard.
- Always turn off the air supply and disconnect the air hose before replacing grinding wheel or making adjustments on this tool.
- Make sure there is no gas or combustible material stored near the tool when servicing, changing insert tools, or storage.

Working environment:



Piping diameters and length requirement:

- ★The diameter ΦA required for the inlet pipe ⑩ is recommended on the specification table.
- ★The diameter ΦB required for the branch pipe (from ⑦ to ⑨) should be 2 times as large as ΦA. ΦB = 2 x ΦA
- ★The diameter ΦC required for the primary air supply (from ① to ③) should be 3 times as large as ΦA. ΦC = 3 x ΦA
- ★The length for the inlet pipe ⑩ should be less than 15 feet (4.5m).

Maintenance:

- Before connecting the air hose to this tool or after operating, apply 4 or 5 drops of pneumatic oil into the air inlet and run it for several seconds, referring this operation to the attached picture.
- Maintain this tool regularly by performing the same oiling application every 3 to 4 hours of operation.
- Do not lubricate tools with flammable or volatile liquids. Use only the lubricant recommended by Mighty-Seven or authorized dealers. Any other lubricant will lead to reduce performance of the tool and permanent damage. Whenever any unauthorized lubricant is used by accident, flush it immediately with recommended pneumatic oil.
- Follow all the recycling laws of waste disposal once this tool is no longer usable.

- It is forbidden to use a separate reduction bushing or adaptors to adapt larger hole grinding wheel.
- To prevent an accidental start, rest the idle grinder in a stable position.
- Release the throttle lever to avoid danger if there is a failure of energy supply and when connecting or disconnecting the air hose.
- Examine the grinding wheel thoroughly before re-use if the tool has been dropped.
- Prolonged use will cause user fatigue. Periodic breaks are recommended for user safety.
- It is recommended to stop operating the tool whenever the user experiences discomfort, tingling or pain during use.
- Beware if the compressed air hose breaks unexpectedly, or is being connected or disconnected improperly. This whipping action may cause injury.
- The spindle speed needs to be checked regularly by a tachometer, with the grinding wheel removed. It should not be higher than the rated free speed under maximum operating pressure.
- Avoid storing this tool where it is subject to high humidity.



CE DECLARATION OF CONFORMITY

Original Language
Serial Number: Please refer to the tool
Air Angle Grinders
Item No.: QB-7215

We declare under our own responsibility that the above machinery fulfils all the relevant provisions of (MD) Machinery Directive 2006/42/EC and its amendment and is manufactured and tested according to the following standards:
EN ISO 11148-7 / EN ISO 15744 / EN ISO 28927-1

Declared in: Taichung, Taiwan
Dated:2020/01/01

Signature

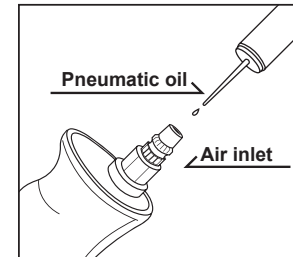
Jay Lin
Declared by: QA Manager

Manufacturer:

Mighty Seven International Co., Ltd.
No. 70-25, Ching Qunag Rd., Wu-Jih Shiang,
Taichung Hsien, 41466 Taiwan
www.mighty-seven.com

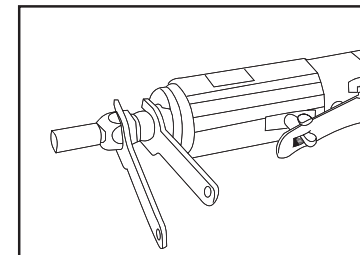
Authorized contact, to compile the technical files :

King Tony France
3 Rue des imprimeurs ZI République Nord 1.
86000 POITIERS FRANCE
TEL : (+33) 5-49-30-30-90
E-MAIL : christian.aubineau@kingtony.eu



Regular maintenance

Shank stone replacing:
Use the supplied spanners to replace.
Note: Turn counterclockwise to open and replace.



Manufacturer's limited warranty
Mighty Seven International Co., Ltd. manufactured by Mighty Seven International Co., Ltd. The limited warranty only covers workmanship and does not include modifications, or repairs by service representatives. To receive service, send it prepaid to the distributor for contact information. Repairs, otherwise, the service of the distributor. Please Keep This card

Date of Purchase :
Warranty Expiration Date :
Distributor Stamp



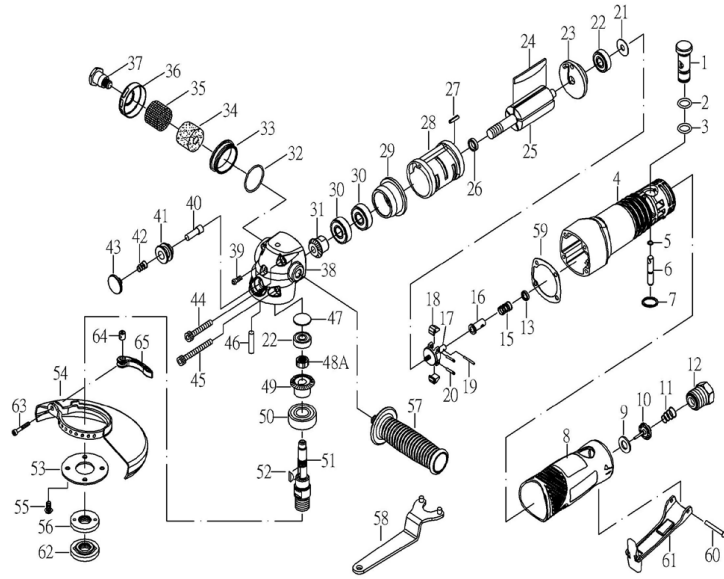
Part List

Item No : QB-7215M



NO.	INDEX NO.	DESCRIPTION	Q'TY
1	QB-7115P01	Regulator	1
2	QB-7115P02	O-Ring (P10)	1
3	QB-7115P03	O-Ring (P9)	1
4	QB-7115P04	Housing	1
5	QB-7115P05	O-Ring(3.5*1.4)	1
6	QB-7115P06	Valve Stem	1
7	QB-7115P07	Snap Ring	1
8	QB-7115P08	Protecting Rubber	1
9	QB-7115P09	Washer	1
10	QB-7115P10	Valve	1
11	QB-7115P11	Spring	1
12	QB-7115P12	Air Inlet	1
13	---	Spring Holder	1
15	---	Spring (9.7*1.2T*16.5)	1
16	---	Governor Valve	1
17	---	Governor Cage	1
18	---	Governor Weight (2 pcs)	1 SET
19	---	Pin (2*11.8L)	1
20	---	Governor Pin (2 pcs)	1 SET
21	QB-7115T21	Washer (2 pcs)	1 SET
22	QB-7115T22	Bearing (608ZZ) (2 pcs)	1 SET
23	QB-7115P23	Rear Plate	1
24	QB-7115T24	Rotor Blade (5 pcs)	1 SET
25	QB-7115P25	Rotor	1
26	QB-7115P26	Bearing Spacer	1
27	QB-7115P27	Pin	1
28	QB-7115P28	Cylinder	1
29	QB-7115P29	Front Plate	1
30	QB-7115T30	Bearing (6000ZZ) (2 pcs)	1 SET
31	QB-7115P31	Bevel Gear (13T)	1
32	QB-7115P32	O-Ring (26.7*1.78 A-023)	1
33	QB-7115P33	Bushing	1
34	QB-7115P34	Silencer	1
35	QB-7115P35	Stainless Mesh	1

NO.	INDEX NO.	DESCRIPTION	Q'TY
36	QB-7115P36	Exhaust Sleeve	1
37	QB-7115P37	Adapter	1
38	QB-7115P38	Angle Housing	1
39	QB-7115P39	Screw (M5*6L)	1
40	---	Shaft Stem	1
41	---	Bushing	1
42	---	Spring	1
43	---	Push Button	1
44	QB-7115T44	Screw (M5*45L) (2 pcs)	1 SET
45	QB-7115T45	Screw (M5*55L) (2 pcs)	1 SET
46	QB-7115P46	Pin (3*12L)	1
47	QB-7115P47	Spacer	1
48	QB-7215P48	Nut	1
49	QB-7115P49	Bevel Gear (19T)	1
50	QB-7115P50	Bearing (6202ZZ)	1
51	QB-7115P51	Shaft (M14*2P)	1
52	QB-7115P52	Key	1
53	QB-7115P53	Face Plate	1
54	QB-7215P54	Disc Cover (4-1/2")	1
55	QB-7115T55	Screw (5 pcs)	1 SET
56	QB-7115P56	Disc Nut (M14*2P)	1
57	QB-7215P57	Handle	1
58	QB-7115P58	Disc Spanner (180mm)	1
59	QB-7115P59	Packing	1
60	QB-7115P60	Spring Pin	1
61	QB-7115P61	Safety Throttle	1
62	QB-7115P62	Disc Nut (M14*2P)	1
63	QB-7215P63	Screw	1
64	QB-7215P64	Bushing	1
65	QB-7215P65	Trigger	1
	QB-7114T01	GOVERNOR VALVE ASS'Y (13~20)	1 SET
	QB-7114T02	SHAFT STEM ASS'Y (40-43)	1 SET



Warranty Card

Warranty
onal CO., LTD. offers limited warranty to the products
y Seven and sold by its worldwide authorized dealers.
 y applies to products that are defective in material and
 not apply to products which have been abused, misused,
 someone other than **Mighty Seven** or its authorized
 If there is a defective product of **Mighty Seven**, please
 dealer where it was purchased from along with address and
 pairs or replacements are warranted as described above;
 f repairs or replacements will be charged.
 For Warranty



Warranty Card

For Distributor

Item No.	Pad Dia inch	Spindle Size	Free Speed R.P.M	Ave. Air Consumption CFM	Air Pressure Psi	Overall Length inch	Motor hp	Net Weight LBS	Air Hose inch	Sound Pressure dBA	Vibration level m/s ²
QB-7215	5*(125)	M14*P2.0	11000	4.2(119)	90(6.3)	9-1/8*(232)	1.3	4.0(1.8)	3/8*(10)	90	1.2

Uncertainty K=0.5a if a ≤ 5 m/s² or K=0.4a if a > 5 m/s²

Date of Purchase :	Model No. :
Warranty Expiration Date :	Serial No. :
Name :	
Company Name :	
Address :	
Tel. :	Fax. :
E-mail :	
Type of Business :	
<input type="checkbox"/> Agriculture	<input type="checkbox"/> Paint & Body Repair
<input type="checkbox"/> General Auto Repair	<input type="checkbox"/> Public Work/Gov. Utilities
<input type="checkbox"/> Tire	<input type="checkbox"/> Factory
<input type="checkbox"/> Truck Maintenance/Repair	<input type="checkbox"/> Home Use
<input type="checkbox"/> Car Maker	<input type="checkbox"/> Other _____
Specification of compressor used :	
Horsepower :	Tank Size (liter/gal) :
<input type="checkbox"/> 5 <input type="checkbox"/> 7.5 <input type="checkbox"/> 10 <input type="checkbox"/> 15+	<input type="checkbox"/> 75.7(20) <input type="checkbox"/> 227.1(60) <input type="checkbox"/> 302.8(80) <input type="checkbox"/> 454.2(120)
<input type="checkbox"/> other _____	<input type="checkbox"/> other _____

