

User's Manual PB-1312 Air Rivet Nut Tool

Read this manual carefully before installing, operating, servicing or repairing.

Working environment:

1. Using these tools in any potentially explosive environment is strictly prohibited.
2. It is always recommended that these types of tools must be operated when standing on a solid or firm location.
3. Always use these tools in a well ventilated area.
4. Slipping, stumbling and falling are the major causes of potential serious injury, therefore, a clean and clutter free surface in the working area before operating the tools is strongly recommended.

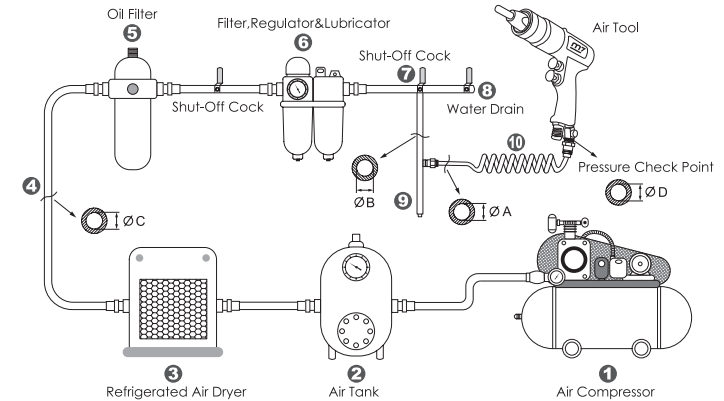
Air supply and connection requirements:

1. The maximum recommended air pressure during operation must not exceed 90 psi (6.3bar). Higher air pressure may create unsafe operating conditions for the tool and the user.
2. The compressed air should be cooled and have a water filter installed at the outlet end of the compressor. Even with a water filter installed, some water may still condense in the piping or hose and will enter the tool mechanism causing premature damage to the tool. Therefore, it is recommended to install an air filter-lubricator device somewhere between the tool and the compressor.
3. Always use an air compressor of the proper capacity to operate each tool.
4. Clean the hose with a blast of compressed air before connecting the hose to the air tool. This will prevent both moisture and dust inside the hose from entering the tool and causing possible rust or malfunction.



1. This tool should only be used as a hand operated tool. It is powered by compressed air and is not insulated against electric shock.
2. This tool is specially designed for riveting sheet metals together. Any application or use of this tool other than what it is designed for is strictly prohibited.
3. High sound levels may cause hearing damage. Always wear hearing protection when operating this tool.
4. Wearing eye/face protection can reduce the danger of high-speed materials being ejected from tool use.
5. User must wear proper clothing. Loose clothing, long hair, stings, straps, belts and jewelry should not be worn when operating this tool.
6. Make sure that the all the specifications of the rivets to be used are compatible with this tool.
7. Check the protection against the ejecting of rivet stem in place and is operative.
8. Make certain to stand on a solid or firm location and keep body in well-balanced position while operating this tool.
9. Always turn off the air supply and disconnect the air hose before changing rivet nose or making adjustments on this tool.
10. Release the throttle lever to avoid danger if there is a failure of energy supply or when connecting or disconnecting the air hose.
11. Prolonged use will cause user fatigue. Periodic breaks are recommended for user safety.
12. It is recommended to stop operating the tool whenever the user experiences discomfort, tingling or pain during use.
13. Beware if the compressed air hose breaks unexpectedly, or is being connected or disconnected improperly. This whipping action may cause injury.

Ideal system connection:



Piping diameters and length requirement:

- ★The diameter ØA required for the inlet pipe (10) is recommended on the specification table.
- ★The diameter ØB required for the branch pipe (from 7 to 9) should be 2 times as large as ØA.
ØB = 2 x ØA
- ★The diameter ØC required for the primary air supply (from 1 to 3) should be 3 times as large as ØA.
ØC = 3 x ØA
- ★The length for the inlet pipe (10) should be less than 15 feet (4.5m).



EC DECLARATION OF CONFORMITY

Original Language
Serial Number: Please refer to the tool
Air Rivet Nut Tool
Item No.: PB-1312
6.3 bar (90. psi)

We declare under our own responsibility that the above machinery fulfils all the relevant provisions of (MD) Machinery Directive 2006/42/EC and its amendment and is manufactured and tested according to the following standards:
EN ISO 11148-1 / EN ISO 15744 / EN ISO 20643+A1

Declared in: Taichung, Taiwan
Dated: 2013/06/01

Signature

Jonney Chen

Jonney Chen
Declared by: QA Manager



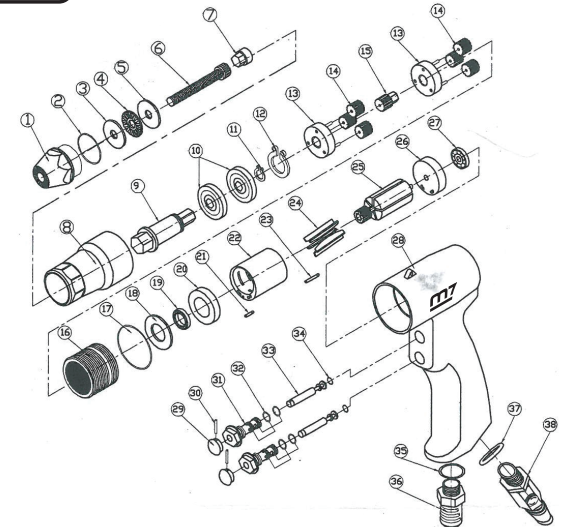
Part List Item No.: PB-1312

NO.	PART NO.	DESCRIPTION	Q'TY
1	---	Nose Piece	1
2	---	O-Ring	1
3	---	Washer	1
4	---	Bearing	1
5	---	Washer	1
6	---	Screw	1
7	---	Ole Driver Hexagon	1
8	PB-1312P8	Nose Housing	1
9	PB-1312P9	Bole Driver For Bearing	1
10	PB-1312T10	Bearing (2 pcs)	1 SET
11	PB-1312P11	C-Shape Ring	1
12	PB-1312P12	C-Shape Ring	1
13	PB-1312T13	Gear Cage (2 pcs)	1 SET
14	PB-1312T47	Planet Gear (6 pcs)	1 SET
15	PB-1312P15	Transmission Planet Gear	1
16	PB-1312P16	Internal Gear	1
17	PB-1312P17	O-Ring	1
18	PB-1312P18	Washer	1
19	PB-1312P19	Bearing	1
20	PB-1312P20	Front End Plate	1
21	PB-1312P21	Pin	1
22	PB-1312P22	Cylinder	1
23	PB-1312P23	Pin	1
24	PB-1312T24	Rotary Blade (5 pcs)	1 SET
25	PB-1312P25	Rotator	1
25	PB-1312P25	Cylinder	1

NO.	PART NO.	DESCRIPTION	Q'TY
26	PB-1312P26	Rear End Plate	1
27	PB-1312P27	Bearing	1
28	PB-1312P28	Motor Case	1
29	PB-1312T29	Switch Lever (2 pcs)	1 SET
30	PB-1312T30	Pin (2 pcs)	1 SET
31	PB-1312T31	Air Inlet Switch (2 pcs)	1 SET
32	PB-1312T32	O-Ring (4 pcs)	1 SET
33	PB-1312T33	Air Valve (2 pcs)	1 SET
34	PB-1312T34	O-Ring (2 pcs)	1 SET
35	PB-1312P35	O-Ring	1
36	PB-1312P36	Silencer Case	1
37	PB-1312P37	O-Ring	1
38	PB-1312P38	Air Regulator	1
PB-1312T01		Nose Piece for M10 (1.2,3,4,5,6)	1 SET
PB-1312T02		Nose Piece for M12 (1.2,3,4,5,6)	1 SET



Air Rivet Nut Tool Item No.: PB-1312



Item No.	Structure	Capacity	Free Speed	Ave. Air Consumption	Air Pressure	Overall Length	Net Weight	Net Weight	Air Hose	Sound Pressure	Vibration level
		mm	rpm	CFM	PSI/bar	mm/inch	kg	lbs	inch	dBA	m/s²
PB-1312	Gear	M10-M12	400	7.8	90(6.3)	---	1.27	2.79	3/8"	86.0	1.6