

User's Manual

PB-1305

Air Rivet Nut Tool

Read this manual carefully before installing, operating, servicing or repairing.

Working environment:

1. Using these tools in any potentially explosive environment is strictly prohibited.
2. It is always recommended that these types of tools must be operated when standing on a solid or firm location.
3. Always use these tools in a well ventilated area.
4. Slipping, stumbling and falling are the major causes of potential serious injury, therefore, a clean and clutter free surface in the working area before operating the tools is strongly recommended.

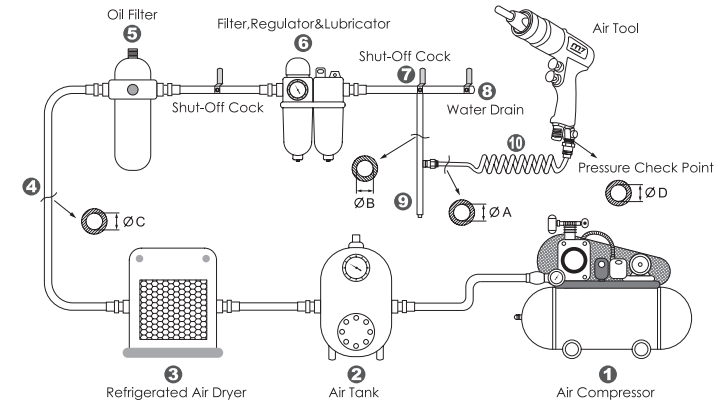
Air supply and connection requirements:

1. The maximum recommended air pressure during operation must not exceed 90 psi (6.3bar). Higher air pressure may create unsafe operating conditions for the tool and the user.
2. The compressed air should be cooled and have a water filter installed at the outlet end of the compressor. Even with a water filter installed, some water may still condense in the piping or hose and will enter the tool mechanism causing premature damage to the tool. Therefore, it is recommended to install an air filter-lubricator device somewhere between the tool and the compressor.
3. Always use an air compressor of the proper capacity to operate each tool.
4. Clean the hose with a blast of compressed air before connecting the hose to the air tool. This will prevent both moisture and dust inside the hose from entering the tool and causing possible rust or malfunction.



1. This tool should only be used as a hand operated tool. It is powered by compressed air and is not insulated against electric shock.
2. This tool is specially designed for riveting sheet metals together. Any application or use of this tool other than what it is designed for is strictly prohibited.
3. High sound levels may cause hearing damage. Always wear hearing protection when operating this tool.
4. Wearing eye/face protection can reduce the danger of high-speed materials being ejected from tool use.
5. User must wear proper clothing. Loose clothing, long hair, stings, straps, belts and jewelry should not be worn when operating this tool.
6. Make sure that the all the specifications of the rivets to be used are compatible with this tool.
7. Check the protection against the ejecting of rivet stem in place and is operative.
8. Make certain to stand on a solid or firm location and keep body in well-balanced position while operating this tool.
9. Always turn off the air supply and disconnect the air hose before changing rivet nose or making adjustments on this tool.
10. Release the throttle lever to avoid danger if there is a failure of energy supply or when connecting or disconnecting the air hose.
11. Prolonged use will cause user fatigue. Periodic breaks are recommended for user safety.
12. It is recommended to stop operating the tool whenever the user experiences discomfort, tingling or pain during use.
13. Beware if the compressed air hose breaks unexpectedly, or is being connected or disconnected improperly. This whipping action may cause injury.

Ideal system connection:



Piping diameters and length requirement:

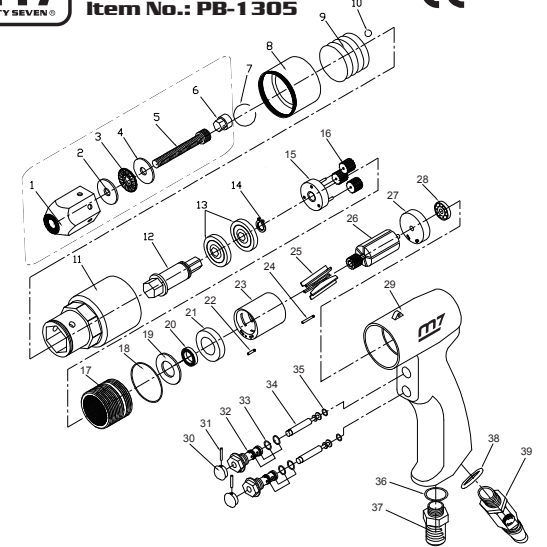
- ★The diameter ΦA required for the inlet pipe (1) is recommended on the specification table.
- ★The diameter ΦB required for the branch pipe (from 7 to 9) should be 2 times as large as ΦA .
 $\Phi B = 2 \times \Phi A$
- ★The diameter ΦC required for the primary air supply (from 1 to 3) should be 3 times as large as ΦA .
 $\Phi C = 3 \times \Phi A$
- ★The length for the inlet pipe (1) should be less than 15 feet (4.5m).

Part List Item No.: PB-1305

NO.	PART NO.	DESCRIPTION	Q'TY
1	---	Nose Piece	1
2	---	Washer	1
3	---	Ball Bearing	1
4	---	Washer	1
5	---	Screw	1
6	---	Ole Driver Hexagon	1
7	PB-1305P07	C-Shape Ring	1
8	PB-1305P08	Bit Sleeve	1
9	PB-1305P09	Sleeve Spring	1
10	PB-1305T10	Bit Lock Ball (3 pcs)	1 SET
11	PB-1305P11	Nose Housing	1
12	PB-1305P12	Bole Driver For Bearing	1
13	PB-1305T13	Ball Bearing (2 pcs)	1 SET
14	PB-1305P14	C-Shape Ring	1
15	PB-1305T15	Gear Cage with Pin	1 SET
16	PB-1305T16	Planet Gear (3 pcs)	1 SET
17	PB-1305P17	Internal Gear	1
18	PB-1305P18	O-Ring	1
19	PB-1305P19	Washer	1
20	PB-1305P20	Ball Bearing	1
21	PB-1305P21	Front End Plate	1
22	PB-1305P22	Pin	1
23	PB-1305P23	Cylinder	1
24	PB-1305P24	Pin	1

NO.	PART NO.	DESCRIPTION	Q'TY
25	PB-1305T25	Rotor Blade (5 pcs)	1 SET
26	PB-1305P26	Rotor	1
27	PB-1305P27	Rear End Plate	1
28	PB-1305P28	Ball Bearing	1
29	PB-1305P29	Motor Housing	1
30	PB-1305T30	Switch Lever (2 pcs)	1 SET
31	PB-1305T31	Pin (2 pcs)	1 SET
32	PB-1305T32	Air Inlet Switch (2 pcs)	1 SET
33	PB-1305T33	O-Ring (4 pcs)	1 SET
34	PB-1305T34	Air Valve (2 pcs)	1 SET
35	PB-1305T35	O-Ring (2 pcs)	1 SET
36	PB-1305P36	O-Ring	1
37	PB-1305P37	Silencer Case	1
38	PB-1305P38	O-Ring	1
39	PB-1305P39	Air Regulator	1
	PB-1305T01	Nose Piece for M3 (1.2.3.4.5.6)	1 SET
	PB-1305T02	Nose Piece for M4 (1.2.3.4.5.6)	1 SET
	PB-1305T03	Nose Piece for M5 (1.2.3.4.5.6)	1 SET
	PB-1305T04	Trigger Ass'y (30.31.32.33.34.35)	1 SET

Air Rivet Nut Tool Item No.: PB-1305



EC DECLARATION OF CONFORMITY

Original Language
Serial Number: Please refer to the tool
Air Rivet Nut Tool
Item No.: PB-1305
6.3 bar (90. psi)

We declare under our own responsibility that the above machinery fulfils all the relevant provisions of (MD) Machinery Directive 2006/42/EC and its amendment and is manufactured and tested according to the following standards:
EN ISO 11148-1 / EN ISO 15744 / EN ISO 20643+A1

Declared in: Taichung, Taiwan
Dated: 2013/06/01

Signature

Jonney Chen

Declared by: QA Manager

Manufacturer:

Mighty Seven International Co., Ltd.
No. 70-25, Ching Quang Rd., Wujih Dist.,
Taichung City, 41466 Taiwan
<http://www.mighty-seven.com>

Authorized contact to compile the technical file:

King Tony France
3 Rue des Imprimeurs ZI République Nord 1.
86000 POITIERS FRANCE
TEL: (+33)5 49 30 30 90
E-MAIL: christian.aubineau@kingtony.eu