



**Read this manual carefully before installing, operating, servicing or repairing.**

#### Working environment:

1. Using these tools in any potentially explosive environment is strictly prohibited.
2. It is always recommended that these types of tools must be operated when standing on a solid or firm location.
3. Always use these tools in a well ventilated area.
4. Slipping, stumbling and falling are the major causes of potential serious injury, therefore, a clean and clutter free surface in the working area before operating the tools is strongly recommended.

#### Air supply and connection requirements:

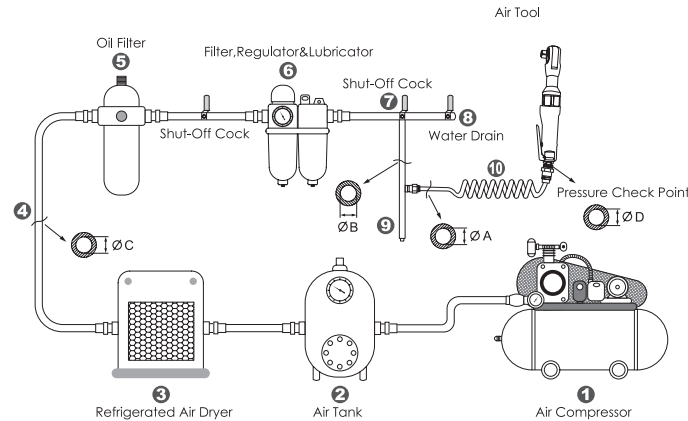
1. The maximum recommended air pressure during operation must not exceed 90 psi (6.3bar). Higher air pressure may create unsafe operating conditions for the tool and the user.
2. The compressed air should be cooled and have a water filter installed at the outlet end of the compressor. Even with a water filter installed, some water may still condense in the piping or hose and will enter the tool mechanism causing premature damage to the tool. Therefore, it is recommended to install an air filter-lubricator device somewhere between the tool and the compressor.
3. Always use an air compressor of the proper capacity to operate each tool.
4. Clean the hose with a blast of compressed air before connecting the hose to the air tool. This will prevent both moisture and dust inside the hose from entering the tool and causing possible rust or malfunction..



#### Warning:

1. This tool should only be used as a hand operated tool. It is powered by compressed air and is not insulated against electric shock.
2. This tool is specially designed for speedy positioning or dismantling bolts or nuts. Any application or use of this tool other than what it is designed for is strictly prohibited.  
Note: The movement, to initially loosen or finally tighten a bolt or screw, must be done by using manual tool instead.
3. Use only pneumatic impact sockets and accessories on this tool. Never use hand sockets or accessories.
4. Wearing eye/face protection can reduce the danger of high-speed socket being ejected from the tool, due to improper socket insertions during operation.
5. High sound levels may cause hearing damage. Always wear hearing protection when operating this tool.
6. User must wear proper clothing. Loose clothing, long hair, stings, straps, belts and jewelry should not be worn when operating this tool.
7. Before using these tools, make sure that all couplings and plugs are securely mounted. Air hoses which are under pressure will cause a whipping action when disconnecting, this can lead to serious injury!
8. Make certain to stand on a solid or firm location and keep body in well-balanced position while operating this tool.
9. Test run the tool to confirm the rotation direction before practical use. This will reduce the potential hazard due to unexpected rotating direction.
10. In case of tool insert failure, keep hands away from rotating socket to reduce the risk of being injured, especially when working in confined spaces.
11. Always turn off the air supply and disconnect the air hose before changing socket or making adjustments on the tool.
12. Release the throttle lever to avoid danger if there is a failure of energy supply or when connecting or disconnecting the air hose.
13. Never use this tool as a hammer, which improper usage can easily damage the tool.
14. Prolonged use will cause user fatigue. Periodic breaks are recommended for user safety.
15. It is recommended to stop operating the tool whenever the user experiences discomfort, tingling or pain during use.
16. Beware if the compressed air hose breaks unexpectedly, or is being connected or

#### Working environment:



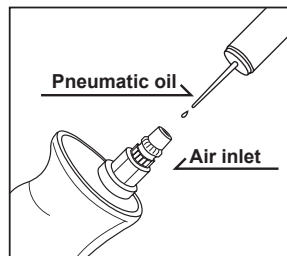
#### Piping diameters and length requirement:

- ★ The diameter ΦA required for the inlet pipe (10) is recommended on the specification table.
- ★ The diameter ΦB required for the branch pipe (from 7 to 9) should be 2 times as large as ΦA.  $\Phi B = 2 \times \Phi A$
- ★ The diameter ΦC required for the primary air supply (from 1 to 8) should be 3 times as large as ΦA.  $\Phi C = 3 \times \Phi A$
- ★ The length for the inlet pipe (10) should be less than 15 feet (4.5m).

17. disconnected improperly. This whipping action may cause injury.
17. Always use caution when operating this tool to prevent injury.
18. Avoid storing this tool where it is subject to high humidity.

#### Maintenance:

1. Before connecting the air hose to this tool or after operating, apply 4 or 5 drops of pneumatic oil into the air inlet and run it for several seconds, referring this operation to the attached picture.
2. Maintain this tool regularly by performing the same oiling application every 3 to 4 hours of operation.
3. Do not lubricate tools with flammable or volatile liquids. Use only the lubricant recommended by Mighty-Seven or authorized dealers. Any other lubricant will lead to reduce performance of the tool and permanent damage. Whenever any unauthorized lubricant is used by accident, flush it immediately with recommended pneumatic oil.
4. Follow all the recycling laws of waste disposal once this tool is no longer usable.



#### Regular maintenance



#### EC DECLARATION OF CONFORMITY

Original Language

Serial Number: Please refer to the tool

AIR IMPACT RATCHET WRENCH

Item No.: NE-2905

We declare under our own responsibility that the above machinery fulfils all the relevant provisions of (MD) Machinery Directive 2006/42/EC and its amendment and is manufactured and tested according to the following standards:  
EN ISO 11148-6 / EN ISO 15744 / EN ISO 28927-2

Declared in: Taichung, Taiwan

Dated: 01/07/2021

Signature

*Jay Lin*

Jay Lin  
Declared by: QA Manager

Manufacturer:

**Mighty Seven International Co., Ltd.**

No. 70-25, Ching Qunag Rd., Wu-Jih Shiang,

Taichung Hsien, 41466 Taiwan

www.mighty-seven.com



Authorized contact, to compile the technical files :

**King Tony Europe**

3 Rue des Imprimeurs ZI République N

86000 POITIERS FRANCE

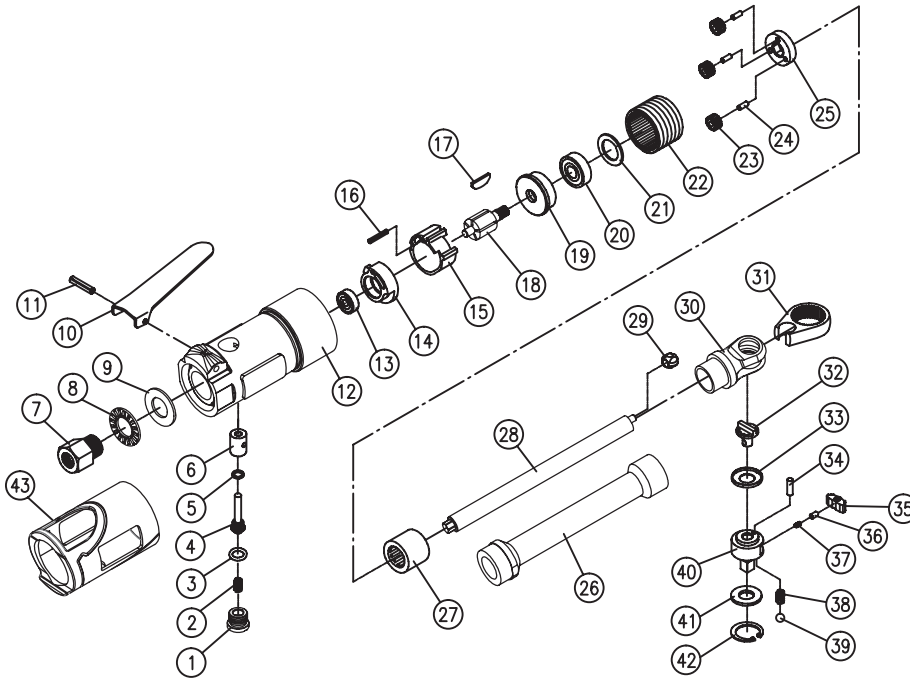
TEL (+33) 5-49-30-30-90

E-MAIL christian.aubineau@kingtony.eu ord



# Part List

Item No : NE-2905



NO.	PART NO.	DESCRIPTION	QTY
1	NE-2905P01	Plug	1
2	NE-2905P02	Spring	1
3	NE-2905P03	O-Ring	1
4	NE-2905P04	Valve Stem	1
5	NE-2905P05	O-Ring	1
6	NE-2905P06	Valve Bushing	1
7	NE-2905P07	Air inlet Bushing	1
8	NE-2905P08	Exhaust Deflector	1
9	NE-2905P09	Muffler	1
10	NE-2905P10	Throttle Lever	1
11	NE-2905P11	Lever Pin	1
12	NE-2905P12	Motor Housing	1
13	NE-2905P13	Ball Bearing 696ZZ	1
14	NE-2905P14	Rear End Plate	1
15	NE-2905P15	Cylinder	1
16	NE-2905P16	Pin	1
17	NE-2905T17	Rotor Blade (5 pcs)	1 SET
18	NE-2905P18	Rotor	1
19	NE-2905P19	Front End Plate	1
20	NE-2905P20	Ball Bearing 608ZZ	1
21	NE-2905T21	Washer (2 pcs)	1 SET
22	NE-2905P22	Ring Gear	1
23	NE-2905T23	Gear (3 pcs)	1 SET
24	NE-2905T24	Gear Pin (3 pcs)	1 SET
25	NE-2905P25	Gear Plate	1

NO.	PART NO.	DESCRIPTION	QTY
26	NE-2905P26	Extension Housing	1
27	NE-2905T27	Needlee Bearing (2pcs)	1 SET
28	NE-2905P28	Crank Shaf	1
29	NE-2905T29	Drive Bushing (2pcs)	1 SET
30	NE-2905P30	Ratchet Housing	1
31	NE-2905P31	Ratchet Yoke	1
32	NE-2905P32	Reverse Button	1
33	NE-2905P33	Washer	1
34	NE-2905P34	Post	1
35	NE-2905P35	Ratchet Pawl	1
36	NE-2905P36	Spring Cap	1
37	NE-2905P37	Spring	1
38	NE-2905T38	Spring (2 pcs)	1 SET
39	NE-2905T39	Steel Ball (2 pcs)	1 SET
40	NE-2905P40	Ratchet Anvil	1
41	NE-2905P41	Washer	1
42	NE-2905P42	Retaining Ring	1
43	NE-2905P43	Grip	1

Item No.	Square Drive inch	Torque Range FT-LB	Max Torque FT-LB	Free Speed R.P.M	Avg. Air Consumption CFM	Air Pressure PSI	Overall Length inch	Net Weight LBS	Air Hose inch	Sound Pressure (Power) dB ISO 15744	Vibration level m/s²
Illustrator											
NE-2905	1/4"	5~15	22	300	3	90	11-2/4"	1.85/0.84	3/8"	89	4.4

Uncertainty K=0.5a if a ≤ 5 m/s² or K=0.4a if a > 5 m/s²

For Distributor

## Warranty Card

### Manufacturer's limited warranty

**Mighty Seven International CO., LTD.** offers limited warranty to the products manufactured by **Mighty Seven** and sold by its worldwide authorized dealers. The limited warranty only applies to products that are defective in material and workmanship and does not apply to products which have been abused, misused, modified, or repaired by someone other than **Mighty Seven** or its authorized service representatives. If there is a defective product of **Mighty Seven**, please send it prepaid to the dealer where it was purchased from along with address and contact information. Repairs or replacements are warranted as described above; otherwise, the service of repairs or replacements will be charged.

Please Keep This card For Warranty

Date of Purchase :	Model No. :
Warranty Expiration Date :	Serial No. :
Distributor Stamp	



## Warranty Card

Date of Purchase :	Model No. :
Warranty Expiration Date :	Serial No. :
Name :	
Company Name :	
Address :	
Tel. :	Fax. :
E-mail :	
Type of Business :	
<input type="checkbox"/> Agriculture <input type="checkbox"/> General Auto Repair <input type="checkbox"/> Tire <input type="checkbox"/> Truck Maintenance/Repair <input type="checkbox"/> Car Maker <input type="checkbox"/> Paint & Body Repair <input type="checkbox"/> Public Work/Gov. Utilities <input type="checkbox"/> Factory <input type="checkbox"/> Home Use <input type="checkbox"/> Other _____	
Specification of compressor used :	
Horsepower :	Tank Size (liter/gal) :
<input type="checkbox"/> 5 <input type="checkbox"/> 7.5 <input type="checkbox"/> 10 <input type="checkbox"/> 15+ <input type="checkbox"/> other _____	<input type="checkbox"/> 75.7(20) <input type="checkbox"/> 227.1(60) <input type="checkbox"/> 302.8(80) <input type="checkbox"/> 454.2(120) <input type="checkbox"/> other _____



Original Language

### UK DECLARATION OF CONFORMITY



Brand Name:  
Serial Number : Please refer to the tool  
Air Ratchet Wrenches  
Item No.: NE-2905

We declare under our own responsibility that the above machinery fulfils all the relevant provisions of (UK-MD) Machinery (Safety) Regulations 2008 (S.I. 2008/1597) and its amendment and is manufactured and tested according to the following standard

BS EN ISO 11148-6:2012  
BS EN ISO 15744:2008  
BS EN ISO 28927-2:2009

Declared in: Taichung, Taiwan  
Date: 2021/07/01

Signature

Declared by: QA Manager Jay Lin

Manufacturer:  
**Mighty Seven International Co., Ltd.**  
No. 70-25, Ching Quang Rd., Wujih Dist.,  
Taichung City, 41466 Taiwan  
http://www.mighty-seven.com

Signature

General Manager Christian Aubineau

Authorized contact to compile the technical file:  
**King Tony Europe**  
3 Rue des imprimeurs ZI République Nord 1.  
86000 POITIERS FRANCE  
TEL: (+33)6-49-30-30-90  
E-MAIL: christian.aubineau@kingtony.eu