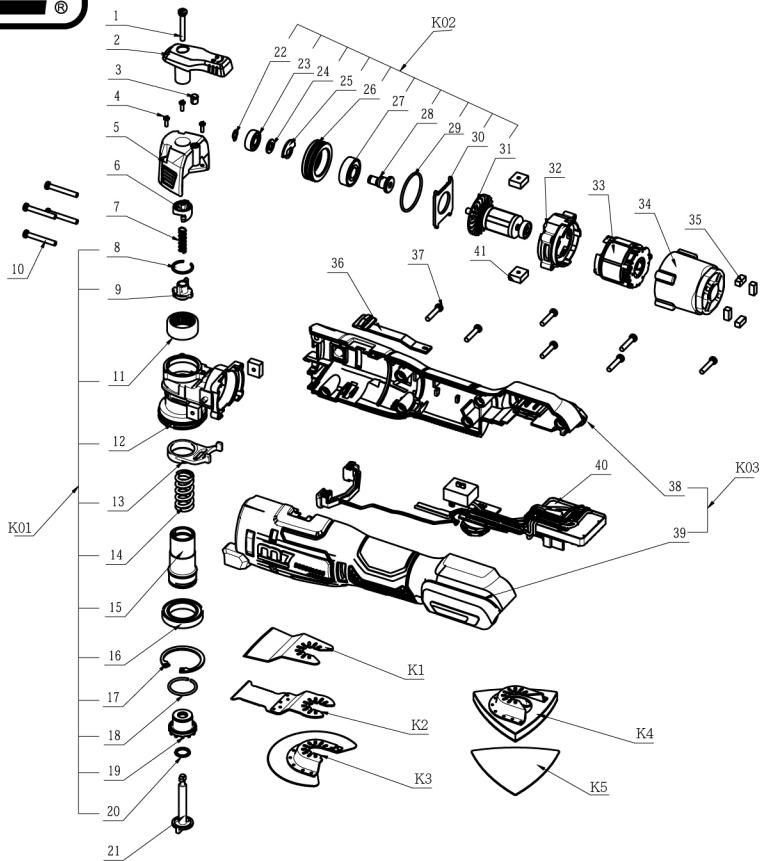




# Cordless Oscillating Multi-Tool

Item No : DOM-101



# Part List DOM-101

| NO. | INDEX NO.  | DESCRIPTION               | Q'TY | NO. | INDEX NO.   | DESCRIPTION  | Q'TY |
|-----|------------|---------------------------|------|-----|-------------|--|------|
| 1   | DOM-101P01 | Screw and Washer Assembly | 1PCS | 28  | DOM-101P28  | Eccentric Shaft  | 1PCS |
| 2   | DOM-101P02 | Lever                     | 1PCS | 29  | DOM-101P29  | O Ring   | 1PCS |
| 3   | DOM-101P03 | Orientation Ball          | 1PCS | 30  | DOM-101P30  | Bearing Clamp  | 1PCS |
| 4   | DOM-101T04 | Screw (3PCS )             | 1SET | 31  | DOM-101P31  | Rotor  | 1PCS |
| 5   | DOM-101P05 | Case Cover                | 1PCS | 32  | DOM-101P32  | Fan Baffle   | 1PCS |
| 6   | DOM-101P06 | Cam                       | 1PCS | 33  | DOM-101P33  | Stator   | 1PCS |
| 7   | DOM-101P07 | Spring                    | 1PCS | 34  | DOM-101P34  | Motor Housing  | 1PCS |
| 8   | DOM-101P08 | C Ring                    | 1PCS | 35  | DOM-101T35  | Spongy Cushion (4PCS)                                      | 1SET |
| 9   | DOM-101P09 | Clamp Block               | 1PCS | 36  | DOM-101P36  | Switch Actuator  | 1PCS |
| 10  | DOM-101T10 | Tapping Screw (4PCS)      | 1SET | 37  | DOM-101T37  | Tapping Screw (7PCS)                                       | 1SET |
| 11  | DOM-101P11 | Needle Bearing            | 1PCS | 38  | DOM-101P38  | Right Housing  | 1PCS |
| 12  | DOM-101P12 | Drive Housing             | 1PCS | 39  | DOM-101P39  | Left Housing   | 1PCS |
| 13  | DOM-101P13 | Lever                     | 1PCS | 40  | DOM-101P40  | Electric Assembly  | 1PCS |
| 14  | DOM-101P14 | Compression Spring        | 1PCS | 41  | DOM-101T41  | Spongy Cushion (4PCS)                                      | 1SET |
| 15  | DOM-101P15 | Quick Clamp Body          | 1PCS | K01 | DOM-101K01  | "Quick Clamp Assembly (8,9,11,12,13,14,15,16,17,18,19,20)" | 1SET |
| 16  | DOM-101P16 | Ball Bearing              | 1PCS | K02 | DOM-101K02  | "Rotor Assembly (22,23,24,25,26,27,28,29,30,31)"           | 1SET |
| 17  | DOM-101P17 | Circlip For Hole          | 1PCS | K03 | DOM-101K03  | L R Housing Set (38,39)                                    | 1SET |
| 18  | DOM-101P18 | C Ring                    | 1PCS | K1  | DOM-101K06  | Rigid Scraper Blade  | 1PCS |
| 19  | DOM-101P19 | Output Shaft              | 1PCS | K2  | DOM-101K07  | Wood & Metal Plunge Cut Blade                              | 1PCS |
| 20  | DOM-101P20 | Magnet Ring               | 1PCS | K3  | DOM-101K3   | Flush Cut Blade  | 1PCS |
| 21  | DOM-101P21 | Lock Pole                 | 1PCS | K4  | DOM-903     | Base Plate Set   | 1PCS |
| 22  | DOM-101P22 | Circlips For Shaft        | 1PCS | K5  | DOM-90306K7 | Sand Paper #60 (7PCS)                                      | 1SET |
| 23  | DOM-101P23 | Ball Bearing              | 1PCS |     | DOM-90312K7 | Sand Paper #120 (7PCS)                                     | 1SET |
| 24  | DOM-101P24 | Washer                    | 1PCS |     | DOM-90318K7 | Sand Paper #180 (7PCS)                                     | 1SET |
| 25  | DOM-101P25 | Counterweight             | 1PCS |     |             |  |      |
| 26  | DOM-101P26 | Bearing Support           | 1PCS |     |             |  |      |
| 27  | DOM-101P27 | Ball Bearing              | 1PCS |     |             |  |      |