



# KING TONY

**KING TONY TOOLS CO., LTD.**

No. 11, Alley 150, Lane 516, Sec. 2, Hsi Nan Rd.,  
Wu-Jih Dist., Taichung City, Taiwan  
Tel : 886-4-2335-3567 Fax : 886-4-2335-3642

**EC DECLARATION OF CONFORMITY  
FOR NON-ANNEX IV MACHINERY  
IN ACCORDANCE WITH  
MACHINERY SAFETY DIRECTIVES**

**2006 / 42 / EC**

**IMPACT WRENCH  
OPERATOR'S INSTRUCTION**

This impact wrench has the CE approval 

WE, **KING TONY TOOLS CO., LTD.** HEREBY CERTIFY THAT THE MACHINERY DESCRIBED BELOW CONFORMS WITH THE ESSENTIAL HEALTH AND SAFETY REQUIREMENTS OF MACHINERY SAFETY DIRECTIVES 2006/42/EC ON THE APPROXIMATION OF THE LAWS OF THE MEMBER STATES RELATING TO THE SAFETY OF MACHINERY,

**IMPACT WRENCH**

**33681-100**

AND COMPLY WITH THE PROVISIONS SET OUT IN THE FOLLOWING EUROPEAN STANDARD:

ISO 12100:2010 (RISK ASSESSMENT & RISK REDUCTION)

ISO 11148-6:2012 (SAFETY REQUIREMENTS)

ISO 15744:2002 (NOISE LEVEL)

ISO 28927-2:2009 (VIBRATION LEVEL)



**DATE OF ISSUE: 8<sup>th</sup> January 2016**

**NAME: Lin Hsien-Wen**

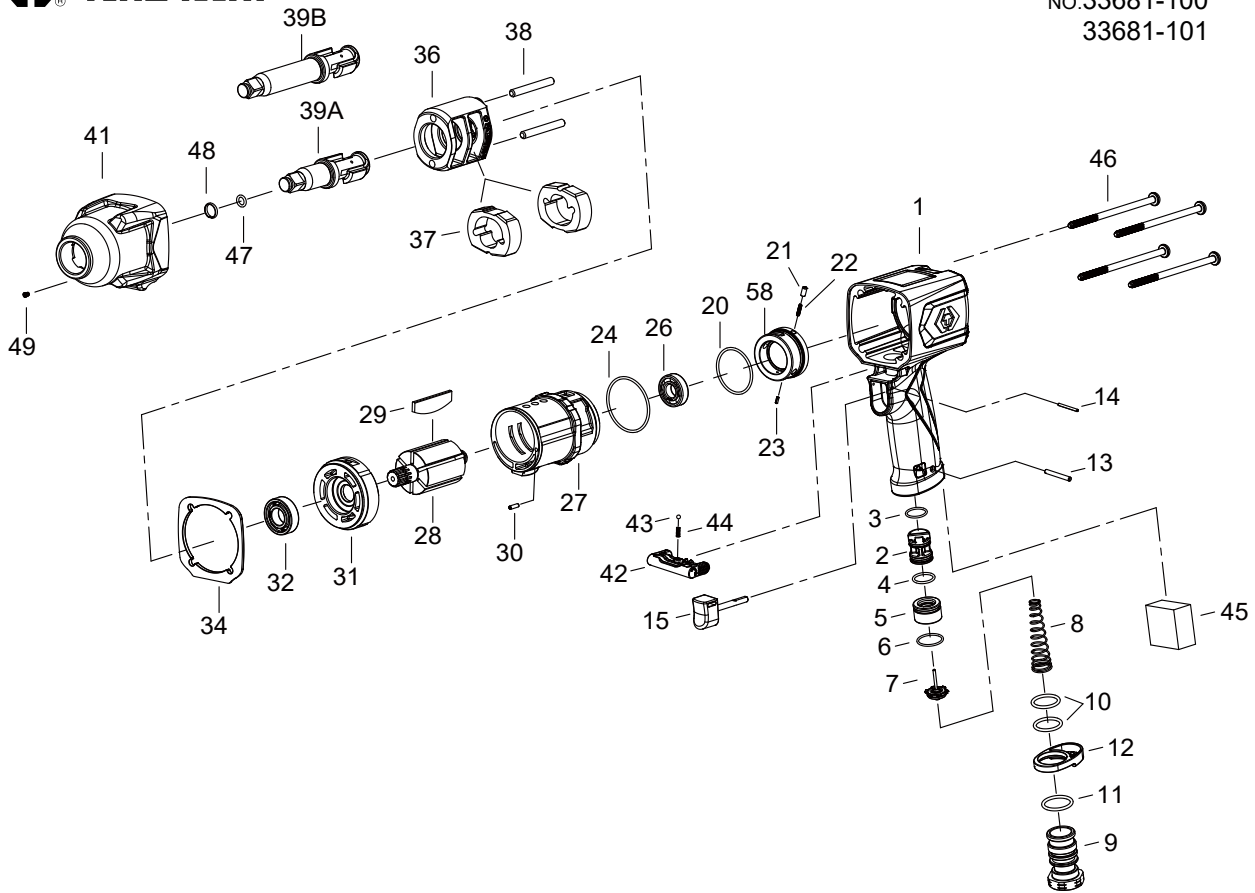
**POSITION/TITLE: General manager**

**SIGNATURE: *Lin Hsien-Wen***

# 3/4" DR. IMPACT WRENCH



NO.33681-100  
33681-101



| INDEX NO. | KT No.      | DESCRIPTION               | REQ'D NO. | INDEX NO. | KT No.      | DESCRIPTION  | REQ'D NO. |
|-----------|-------------|---------------------------|-----------|-----------|-------------|--|-----------|
| 1         | 033481-A01  | Motor Housing             | 1         | 30        | 033481-A30  | Spring Pin   | 1         |
| 2         | 033481-A02  | Reverse Valve             | 1         | 31        | 033481-A31  | End Plate  | 1         |
| 3         | 033481-A03  | O-Ring                    | 1         | 32        | 033411-B24  | Ball Bearing   | 1         |
| 4         | 033481-A04  | O-Ring                    | 1         | 34        | 033481-A34  | Gasket   | 1         |
| 5         | 033481-A05  | Throttle Valve Seat       | 1         | 36        | 033611-A34  | Hammer Frame   | 1         |
| 6         | 033812-A48  | O-Ring                    | 1         | 37        | 033411-A37  | Hammer   | 2         |
| 7         | 033631-C03  | Throttle Valve Assembly   | 1         | 38        | 033411-A35  | Hammer Pin   | 2         |
| 8         | 033481-A08  | Spring                    | 1         | 39A       | 033611-A43A | Standard Anvil ( for 33681-100 )   | 1         |
| 9         | 033481-A09  | Air Inlet ( for 19 BSPT ) | 1         | 39B       | 033611-A43B | 2" Extended Anvil ( for 33682-101 )  | 1         |
| 9A        | 033481-A09A | Air Inlet ( for 18 NPT )  | 1         | ★ 41      | 033681-A41  | Hammer Case Assembly ( incl.49 )   | 1         |
| 10        | 033481-A10  | O-Ring                    | 2         | 42        | 033481-A42  | Reverse Knob   | 1         |
| 11        | 033481-A11  | O-Ring                    | 1         | 43        | 033411-A13  | Steel Ball   | 1         |
| 12        | 033481-A12  | Exhaust Deflector         | 1         | 44        | 033351-A21  | Steel Ball Spring  | 1         |
| 13        | 033351-A13  | Spring Pin                | 1         | 45        | 033481-A45  | Muffler Element  | 1         |
| 14        | 033481-A14  | Spring Pin                | 1         | 46        | 033481-A46  | Screw  | 4         |
| 15        | 033481-A15  | Trigger Assembly          | 1         | 47        | 033611-A45  | O-Ring   | 1         |
| 20        | 033481-A20  | O-Ring                    | 1         | 48        | 033611-A44  | Socket Retainer  | 1         |
| 21        | 033481-A21  | Pin                       | 1         | ● 49      | 037221-A52  | Grease Fitting   | 1         |
| 22        | 033481-A22  | Spring                    | 1         | 58        | 033481-A58  | Reverse Valve Knob   | 1         |
| 23        | 033481-A23  | Spring Pin                | 1         | TK1       | 033481-ATK1 | Front End Plate Assembly ( incl.31.32 )  |           |
| 24        | 033481-A24  | O-Ring                    | 1         | TK2       | 033481-ATK2 | Cylinder Assembly ( incl.27.30 )   |           |
| 26        | 033481-A26  | Ball Bearing              | 1         | TK3       | 033611-ATK3 | Standard Anvil Assembly ( incl.39A.47.48 )                                     |           |
| 27        | 033481-A27  | Cylinder Assembly         | 1         | TK4       | 033611-ATK4 | 2" Extended Anvil Assembly ( incl.39B.47.48 )                                  |           |
| 28        | 033481-A28  | Rotor                     | 1         | TK        | 033681-ATK  | Tune-Up Kit ( incl.3.4.6.8.10 ( 2 ) .11.20.22.24.29 ( 6 ) .34.43.44.45.47.48 ) |           |
| 29        | 033481-A29  | Rotor Blade               | 6         |           |             |  |           |

★ Must be purchased in assembly set

● Recommended not to be purchased alone due to assembly difficulty

20160102R1

**Air Pressure : 6.2 Bar (90 PSI)**

| Inspec. Item No. | Square drive | Std. Bolt Size |     | Free Speed | MAX. Torque |      | Overall Length |     | Air Inlet | Air Hose | Avg. Air Consumption |       | Net Weight |      | Sound Pressure Level A-weighted | Sound Power Level A-weighted | Sound Pressure Valve Peak C-weighted | Vib. M/S2 |
|------------------|--------------|----------------|-----|------------|-------------|------|----------------|-----|-----------|----------|----------------------|-------|------------|------|---------------------------------|------------------------------|--------------------------------------|-----------|
|                  | inch         | inch           | mm  | R.P.M      | ft-lb       | N.m  | inch           | mm  | BSPT/NPT  | ID       | cfm                  | l/min | lbs        | kgs  | 96.00                           | 107.00                       | 122.00                               | 8.98      |
| 33681-100        | 3/4          | 1-3/16         | M30 | 8000       | 1100        | 1492 | 8-3/8"         | 211 | 1/4" BSPT | 3/8      | 6.7                  | 190   | 5.20       | 2.35 | 96.00                           | 107.00                       | 122.00                               | 8.98      |
| 33681-101        | 3/4          | 1-3/16         | M30 | 8000       | 1100        | 1492 | 8-3/8"         | 211 | 1/4" NPT  | 3/8      | 6.7                  | 190   | 5.20       | 2.35 | 96.00                           | 107.00                       | 122.00                               | 8.98      |





# KING TONY

**KING TONY TOOLS CO., LTD.**

No. 11, Alley 150, Lane 516, Sec. 2, Hsi Nan Rd.,  
Wu-Jih Dist., Taichung City, Taiwan  
Tel : 886-4-2335-3567 Fax : 886-4-2335-3642

**EC DECLARATION OF CONFORMITY  
FOR NON-ANNEX IV MACHINERY  
IN ACCORDANCE WITH  
MACHINERY SAFETY DIRECTIVES**

**2006 / 42 / EC**

**IMPACT WRENCH  
OPERATOR'S INSTRUCTION**

This impact wrench has the CE approval 

WE, **KING TONY TOOLS CO., LTD.** HEREBY CERTIFY THAT THE MACHINERY DESCRIBED BELOW CONFORMS WITH THE ESSENTIAL HEALTH AND SAFETY REQUIREMENTS OF MACHINERY SAFETY DIRECTIVES 2006/42/EC ON THE APPROXIMATION OF THE LAWS OF THE MEMBER STATES RELATING TO THE SAFETY OF MACHINERY,

**IMPACT WRENCH**

**33681-101**

AND COMPLY WITH THE PROVISIONS SET OUT IN THE FOLLOWING EUROPEAN STANDARD:

ISO 12100:2010 (RISK ASSESSMENT & RISK REDUCTION)

ISO 11148-6:2012 (SAFETY REQUIREMENTS)

ISO 15744:2002 (NOISE LEVEL)

ISO 28927-2:2009 (VIBRATION LEVEL)



**DATE OF ISSUE: 8<sup>th</sup> January 2016**

**NAME: Lin Hsien-Wen**

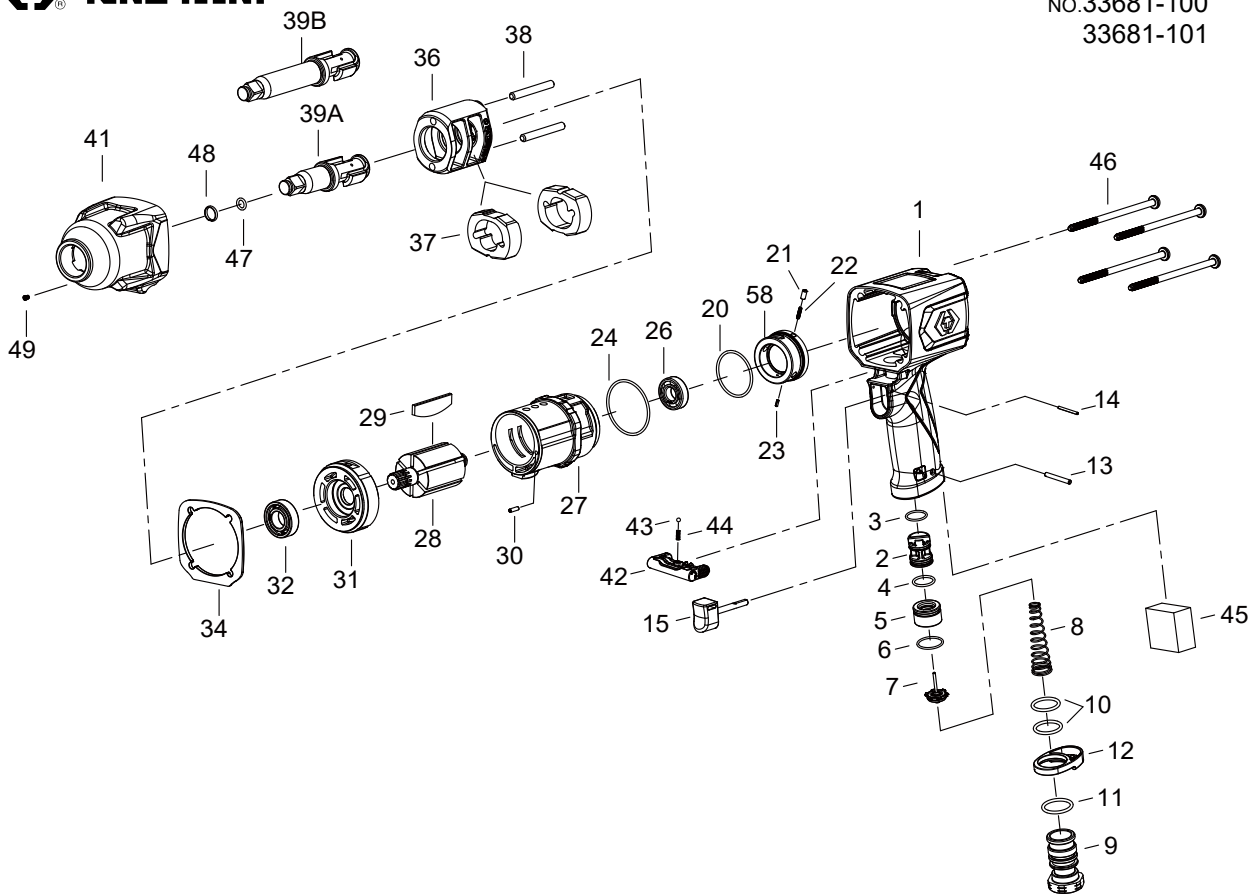
**POSITION/TITLE: General manager**

**SIGNATURE: *Lin Hsien-Wen***

# 3/4" DR. IMPACT WRENCH



NO.33681-100  
33681-101



| INDEX NO. | KT No.      | DESCRIPTION               | REQ'D NO. | INDEX NO. | KT No.      | DESCRIPTION  | REQ'D NO. |
|-----------|-------------|---------------------------|-----------|-----------|-------------|--|-----------|
| 1         | 033481-A01  | Motor Housing             | 1         | 30        | 033481-A30  | Spring Pin   | 1         |
| 2         | 033481-A02  | Reverse Valve             | 1         | 31        | 033481-A31  | End Plate  | 1         |
| 3         | 033481-A03  | O-Ring                    | 1         | 32        | 033411-B24  | Ball Bearing   | 1         |
| 4         | 033481-A04  | O-Ring                    | 1         | 34        | 033481-A34  | Gasket   | 1         |
| 5         | 033481-A05  | Throttle Valve Seat       | 1         | 36        | 033611-A34  | Hammer Frame   | 1         |
| 6         | 033812-A48  | O-Ring                    | 1         | 37        | 033411-A37  | Hammer   | 2         |
| 7         | 033631-C03  | Throttle Valve Assembly   | 1         | 38        | 033411-A35  | Hammer Pin   | 2         |
| 8         | 033481-A08  | Spring                    | 1         | 39A       | 033611-A43A | Standard Anvil ( for 33681-100 )   | 1         |
| 9         | 033481-A09  | Air Inlet ( for 19 BSPT ) | 1         | 39B       | 033611-A43B | 2" Extended Anvil ( for 33682-101 )  | 1         |
| 9A        | 033481-A09A | Air Inlet ( for 18 NPT )  | 1         | ★ 41      | 033681-A41  | Hammer Case Assembly ( incl.49 )   | 1         |
| 10        | 033481-A10  | O-Ring                    | 2         | 42        | 033481-A42  | Reverse Knob   | 1         |
| 11        | 033481-A11  | O-Ring                    | 1         | 43        | 033411-A13  | Steel Ball   | 1         |
| 12        | 033481-A12  | Exhaust Deflector         | 1         | 44        | 033351-A21  | Steel Ball Spring  | 1         |
| 13        | 033351-A13  | Spring Pin                | 1         | 45        | 033481-A45  | Muffler Element  | 1         |
| 14        | 033481-A14  | Spring Pin                | 1         | 46        | 033481-A46  | Screw  | 4         |
| 15        | 033481-A15  | Trigger Assembly          | 1         | 47        | 033611-A45  | O-Ring   | 1         |
| 20        | 033481-A20  | O-Ring                    | 1         | 48        | 033611-A44  | Socket Retainer  | 1         |
| 21        | 033481-A21  | Pin                       | 1         | ● 49      | 037221-A52  | Grease Fitting   | 1         |
| 22        | 033481-A22  | Spring                    | 1         | 58        | 033481-A58  | Reverse Valve Knob   | 1         |
| 23        | 033481-A23  | Spring Pin                | 1         | TK1       | 033481-ATK1 | Front End Plate Assembly ( incl.31.32 )  |           |
| 24        | 033481-A24  | O-Ring                    | 1         | TK2       | 033481-ATK2 | Cylinder Assembly ( incl.27.30 )   |           |
| 26        | 033481-A26  | Ball Bearing              | 1         | TK3       | 033611-ATK3 | Standard Anvil Assembly ( incl.39A.47.48 )                                     |           |
| 27        | 033481-A27  | Cylinder Assembly         | 1         | TK4       | 033611-ATK4 | 2" Extended Anvil Assembly ( incl.39B.47.48 )                                  |           |
| 28        | 033481-A28  | Rotor                     | 1         | TK        | 033681-ATK  | Tune-Up Kit ( incl.3.4.6.8.10 ( 2 ) .11.20.22.24.29 ( 6 ) .34.43.44.45.47.48 ) |           |
| 29        | 033481-A29  | Rotor Blade               | 6         |           |             |  |           |

★ Must be purchased in assembly set

● Recommended not to be purchased alone due to assembly difficulty

20160102R1

**Air Pressure : 6.2 Bar (90 PSI)**

| Inspec. Item No. | Square drive | Std. Bolt Size |     | Free Speed | MAX. Torque |      | Overall Length |     | Air Inlet | Air Hose | Avg. Air Consumption |       | Net Weight |      | Sound Pressure Level A-weighted | Sound Power Level A-weighted | Sound Pressure Valve Peak C-weighted | Vib. M/S2 |
|------------------|--------------|----------------|-----|------------|-------------|------|----------------|-----|-----------|----------|----------------------|-------|------------|------|---------------------------------|------------------------------|--------------------------------------|-----------|
|                  | inch         | inch           | mm  | R.P.M      | ft-lb       | N.m  | inch           | mm  | BSPT/NPT  | ID       | cfm                  | l/min | lbs        | kgs  | 96.00                           | 107.00                       | 122.00                               | 8.98      |
| 33681-100        | 3/4          | 1-3/16         | M30 | 8000       | 1100        | 1492 | 8-3/8"         | 211 | 1/4" BSPT | 3/8      | 6.7                  | 190   | 5.20       | 2.35 | 96.00                           | 107.00                       | 122.00                               | 8.98      |
| 33681-101        | 3/4          | 1-3/16         | M30 | 8000       | 1100        | 1492 | 8-3/8"         | 211 | 1/4" NPT  | 3/8      | 6.7                  | 190   | 5.20       | 2.35 | 96.00                           | 107.00                       | 122.00                               | 8.98      |

