

KING TONY TOOLS CO., LTD.

IMPACT WRENCH OPERATIONAL MANUAL

This impact wrench has the CE approval



CAUTIONS FOR USE

A-1 AIR PRESSURE: The air pressure of tool during operating must be restricted at or less than the maximum pressures of 90-psi (6.2 bar). Don't exceed it.

A-2 AIR LINE: Use a air hose between the compressor and the tool, the corresponding hose diameter are recommended in the attached table in data sheet compressed air is cooled and its water content separated, as soon as the air leaves the compressor. A portion of the water content, however, is condensed in the piping, and can enter the tool mechanism, and may cause trouble. So install an air filter and on oiler between the compressor and the tool.

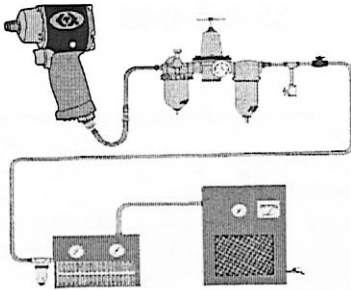
A-3 AIR HOSE: Clean the hose with a blast of compressed air before connecting the hose to air tool. This will prevent both moisture and dust within the hose from entering the tool and causing possible rust or malfunction. To compensate for unusually long hose (over 25ft.), the line pressure should be increased accordingly.

A-4 INSERTED TOOLS: Use only the impact socket or adapter which are in good condition for use. The intended socket and adapter for this air tool could be stated as "Square Drive" on the data sheet.

A-5 The approved eye protector, mouth-muffle, hearing protector, and gloves shall be worn when operating the tool.

A-6 The working place shall be ventilative.

A-7 Release the on-off device in the case of air supply failure.



B. OPERATION METHOD

B-1 ON-OFF DEVICE: The on-off device is on the inner or outer contour of the grip. It is a "hold-to-run" type. This tool stops rotation in a few seconds after releasing the lever. For the sake of safety, place it on a level plate or on hanger after completely stop.

B-2 TORQUE ADJUSTER: You can adjust the torque by rotating the knob, which indicated by 1 to 6 depending on modes. "1" indicates the smallest torque output and "3" indicates the largest torque output.

B-3 ROTATING DIRECTION: One shall make sure the direction of rotation before operating these tools. The "F" indicates forward and the "R" indicates reverse. Forward as clockwise direction seen from the operator's position.

C. MAINTENANCE

C-1 LUBRICATION: Before connecting the hose, apply 4 or 5 drops of #60 spindle oil at the air inlet. Use of a thicker oil can lead to reduced performance of function. If a thicker oil is used by accident, wash it away immediately. Also, every 3 or 4 hours of operation, oiling is necessary.

C-2 STORAGE: Avoid storing the tool in a location subject to high humidity. If the tool is left as it is used. The residual moisture inside the tool can cause rust. Before storing and after operation, oil the tool at the air inlet with spindle oil and run it for a short time.

C-3 DISPOSAL: If the tool is too seriously damaged to be used anymore, drop it in a resource recycling can. Never drop it into fire.

C-4 For ordering service parts for further operation and handling information required or for replacement of parts and components, contact the sale agent from where you purchased the tool or the service division of our company.



WARNING

1. The tool shall not be used in potentially explosive atmospheres
2. Disconnect the air hose before changing or adjusting any inserted tools.
3. Before using tool please confirm all couplings and plugs are under security. Air hoses that under pressure may lash out when disconnected and could lead to serious injuries.
4. Prevent long hair or loose clothing from drawing in while operate this tool.
5. Excessive high air pressure that exceeds the maximum pressure may cause injuries to user.
6. Keep your body in well-balanced position and always wear gloves to reduce the risk of crusting caused by torque between handle and workplace.
7. Strong vibrations may lead to feelings of numbness.
8. Unexpected direction may lead to feelings of numbness.
9. Slip/trip/fall are a major reason of serious injury or death. Beware of excess hose left on the walking or work surface.
10. Wearing-eye/face protector could reduce the danger to person from high-speed splinters being emitted from this tool in the case of inserted tool failure or emitted from the workplace.
11. Wearing correct breathing protection could avoid inhaling dust or handing debris from work process that can be harmful to your health.
12. Never operate the tool off the work. It may cause the accessories thrown out from the tool and injure someone who operates in the work area.
13. High sound level can cause permanent hearing loss. Use hearing protection while operating the tools.
14. The-ratchet wrench may kickback and cause injuries if the nut is tight condition, however, when tight or loosen it, use manual operation, and release the on/off lever.

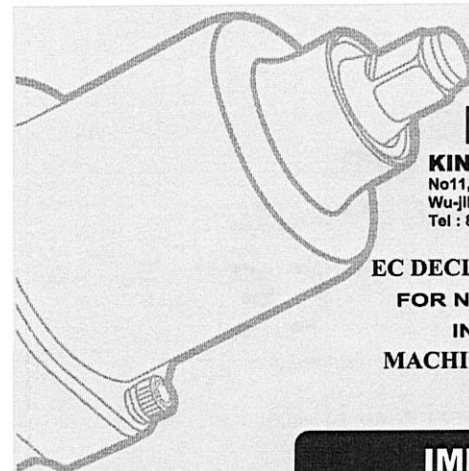
Manufacture's limited warranty

KING TONY TOOLS CO., LTD. Offers one-year free charge service warranty to the products that manufactured by King Tony and sold by its worldwide authorized dealers. All products are warranted under the following conditions:

- 1) **THE WARRANTY PERIOD:** One year from the date of purchase and with the logo of King Tony.
- 2) The free charge service only for defects in material and workmanship, excluding any other inappropriate operation, modified or repaired by someone other than King Tony of its authorized service representatives. If there is any defective products of King Tony please send it with a prepaid transportation to our dealers where you purchased from, the service of repairs and replacements that fit the above case will be free. Otherwise, the service will be charged to charger to the expired warranty, incidental consequential, or any other damages.

Air Pressure : 6.2 Bar (90PSI)

Inspec. Item No.	Square drive	Sld. Bolt Size	Free Speed	MAX. Torque		Overall Length		Air Inlet	Air Hose	Avg. Air Consumption		Net Weight		Sound Pressure Level	Sound Power Level A-weighted	Sound Pressure Valve Peak C-weighted	Vib. M/S ²
	inch	inch	mm	r.p.m	ft-lb	N.M	inch	mm	PT	I.D	cfm	l/min	lbs	kg	A-weighted	A-weighted	C-weighted
33351-040	3/8	5/8	M16	9000	400	540	4-3/4	120	1/4	3/8	5.8	164	3.12	1.6	93.7	104.7	110
33451-045	1/2	5/8	M16	9000	450	610	4-4/5	125	1/4	3/8	5.8	164	3.12	1.6	93.7	104.7	110



KING TONY TOOLS CO., LTD.
No11, 150 Alley, 516 Lane, 2 Sec., Hsi Nan Rd.,
Wu-Jih shiang, Taichung Hsien, Taiwan, R.O.C.
Tel : 886-4-2335-3567 Fax : 886-4-2335-3642

**EC DECLARATION OF CONFORMITY
FOR NON-ANNEX IV MACHINERY
IN ACCORDANCE WITH
MACHINERY SAFETY DIRECTIVES
2006 / 42 / EC**

IMPACT WRENCH OPERATOR'S INSTRUCTION

This impact wrench has the CE approval

WE, **KING TONY TOOLS CO., LTD.** HEREBY CERTIFY THAT THE MACHINERY DESCRIBED BELOW CONFORMS WITH THE ESSENTIAL HEALTH AND SAFETY REQUIREMENTS OF MACHINERY SAFETY DIRECTIVES 2006/42/EC ON THE APPROXIMATION OF THE LAWS OF THE MEMBER STATES RELATING TO THE SAFETY OF MACHINERY,

IMPACT WRENCH

33351-040
33451-045

AND COMPLY WITH THE PROVISIONS SET OUT IN THE FOLLOWING EUROPEAN STANDARD:
EN 792-6:2000 +A1:2008 (AIR IMPACT WRENCH)
BS EN ISO 12100-1:2003+A1:2009 (GENERAL SAFETY REQUIREMENT)
BS EN ISO 12100-2:2003+A1:2009 (GENERAL SAFETY REQUIREMENT)
EN ISO 15744:2008 (NOISE LEVEL)
EN 28662-1:1993 & ISO 28927-2 (VIBRATION LEVEL)



DATE OF ISSUE: 4th February 2010

NAME: Lin Hsien-Wen

POSITION/TITLE: vice-general manager

SIGNATURE: Lin Hsien-Wen

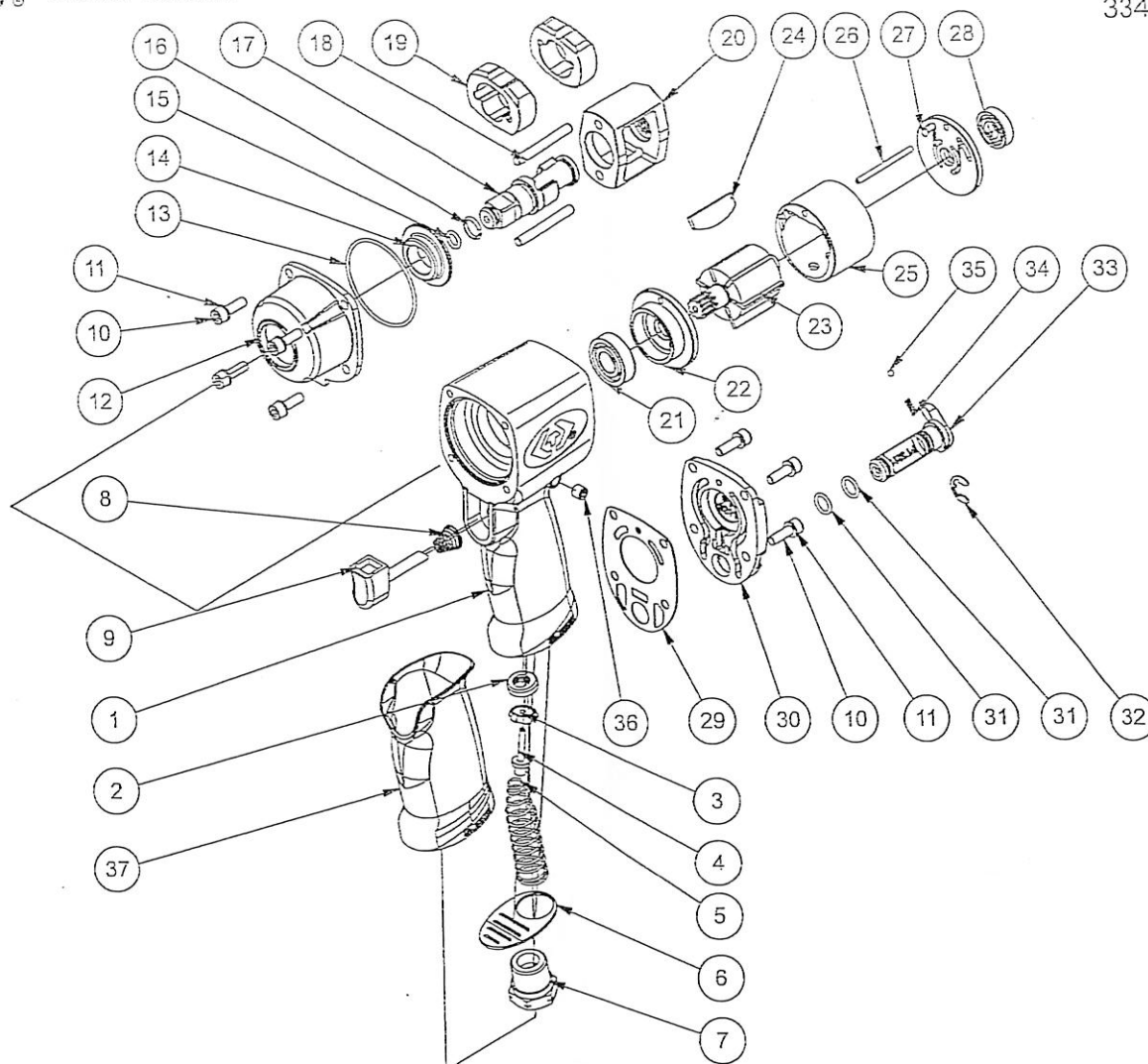


3/8" & 1/2" DR. IMPACT WRENCH



ITEM NO: 33351-040

33451-045



INDEX NO.	DESCRIPTION	REQ'D NO.	INDEX NO.	DESCRIPTION	REQ'D NO.
1	Housing	1	20	Hammer Cage	1
2	Throttle Valve Piece	1	21	Bearing	1
3	Throttle Valve	1	22	Front End Plate	1
4	Throttle Valve Pin	1	23	Rotor	1
5	Spring	1	24	Rotor Blade	6
6	Exhaust Deflector	1	25	Cylinder	1
7	Air Inlet	1	26	Cylinder Pin	1
8	Spring	1	27	Rear End Plate	1
9	Trigger	1	28	Bearing	1
10	Hexagon Socket Head Screw	8	29	Gasket	1
11	Spring Lock Washer	8	30	Rear Cover	1
12	Housing Cover	1	31	O-Ring	2
13	O-Ring	1	32	E-Rotaining Ring	1
14	Bushing	1	33	Reverse Button	1
15	O-Ring	1	34	Spring	1
16	Anvil Collar	1	35	Steel Ball	1
17	Anvil	1	36	Set Screw	1
18	Hammer Pin	2	37	Rubber Grip	1
19	Hammer	2			